

TriColor Protein Ladder (10–180 kDa)

LOT: See product label

EXPIRY DATE: See product label

ORDERING INFORMATION

CAT. NO.	SIZE	PACKAGE CONTENT
BR0900201	100 lanes	2 × 250 µl TriColor Protein Ladder (10–180 kDa)

COMPONENT	COMPOSITION
TriColor Protein Ladder (10–180 kDa)	Ready-to use protein ladder containing 0.2 – 0.4 mg/ml of each protein in 20 mM Tris-phosphate, pH 7.5, 2 % SDS, 0.2 mM DTT, 3.6 M urea, and 15% (v/v) glycerol.

STORAGE –20°C (until expiry date – see product label)

FEATURES

- Ready-to-use prestained protein ladders covering 10–180 kDa ranges
- Pure and stable — retain sharp bands after 3 months storage at 4°C
- Protein bands in three colors with easily recognizable colored reference bands

APPLICATIONS

- Approximate protein sizing on SDS PAGE and western blots
- Monitoring protein gel electrophoresis and western transfers

TriColor Protein Ladder (10–180 kDa)

DESCRIPTION

biotechrabbit™ TriColor Protein Ladder facilitates approximate molecular-weight estimation of proteins on denaturing polyacrylamide gels, monitoring protein separation during electrophoresis and verification of western transfer efficiency to membranes (polyvinylidene difluoride, nylon or nitrocellulose). The ladder provides three colored reference bands.

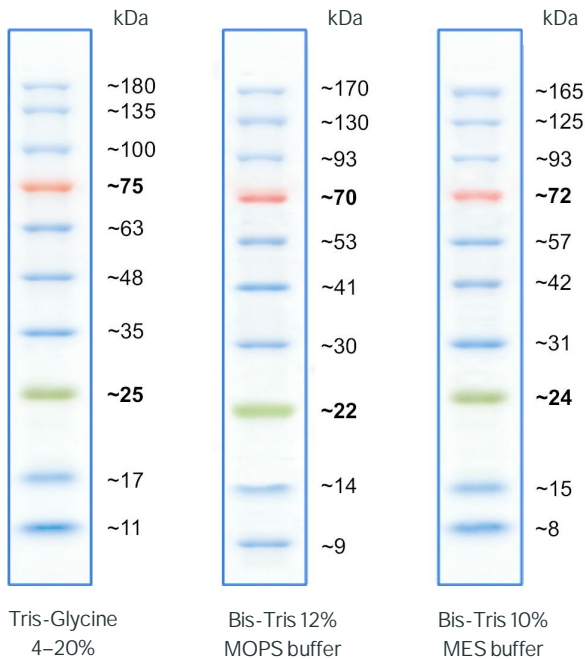
TriColor Protein Ladder is ready for immediate use and is notably stable: sharp bands are produced after storage for 2 weeks at room temperature or 3 months at 4°C, eliminating the need to thaw before loading.

TRICOLOR BROAD PROTEIN LADDER

Range: 10 – 180 kDa

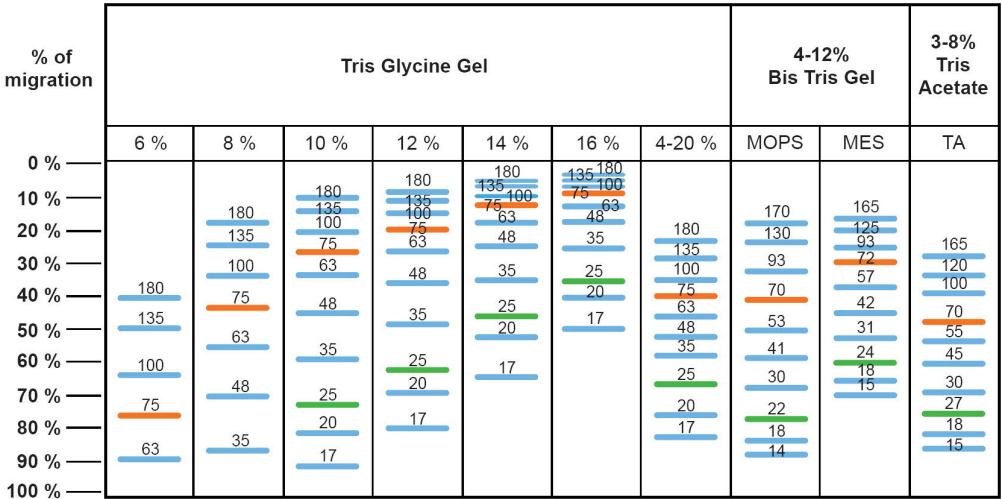
Reference: ~25 and ~75 kDa

Number of bands: 10



GUIDE FOR MOLECULAR WEIGHT ESTIMATION (KDA)

Migration patterns of TriColor Protein Ladder (10–180 kDa) in different electrophoresis conditions.



The apparent molecular weight (kDa) of each protein has been determined by calibration against unstained protein standards.

PROTOCOL

COMPONENT	LOADING VOLUME	ACTIONS BEFORE LOADING
TriColor Protein Ladder (10–180 kDa)	3 or 5 μ l for 15 or 10-well mini-gel, respectively. 2 or 3 μ l for Western transfer. <i>Apply more for thicker (>1.5 mm) or larger gels.</i>	Direct loading

TriColor Protein Ladder (10–180 kDa)

CERTIFICATE OF ANALYSIS

Functional assay

Appearance of all stated bands tested in SDS-Polyacrylamide gel electrophoresis.

Quality confirmed by: Head of Quality Control

SAFETY INSTRUCTIONS

For safety instructions please see Safety Data Sheets (SDS)/Sicherheitshinweise finden Sie in den SDS unter: <http://www.biotechrabbit.com/support/documentation.html>.

USEFUL HINTS

- Visit Applications at www.biotechrabbit.com for more products and product selection guides.
- Most biotechrabbit products are available in custom formulations and bulk amounts.

CONTACT BIOTECHRABBIT

biotechrabbit GmbH
Volmerstr. 9a
12489 Berlin, Germany

info@biotechrabbit.com
support@biotechrabbit.com
www.biotechrabbit.com

Phone: +49 30 555 7821-10
Fax: +49 30 555 7821-99



Legal Disclaimer and Product Use Limitation

Purchase of product does not include a license to perform any patented applications; therefore it is the sole responsibility of users to determine whether they may be required to engage a license agreement depending upon the particular application in which the product is used. This product was developed, manufactured, and sold for in vitro use only. It is not suitable for administration to humans or animals.

Trademarks: biotechrabbit™ (biotechrabbit GmbH).

valid from 13.02.2017